



# 1200SJP/1350SJP Product Introduction

Michael Jin  
Sr. Product Marketing Manager  
2016.6

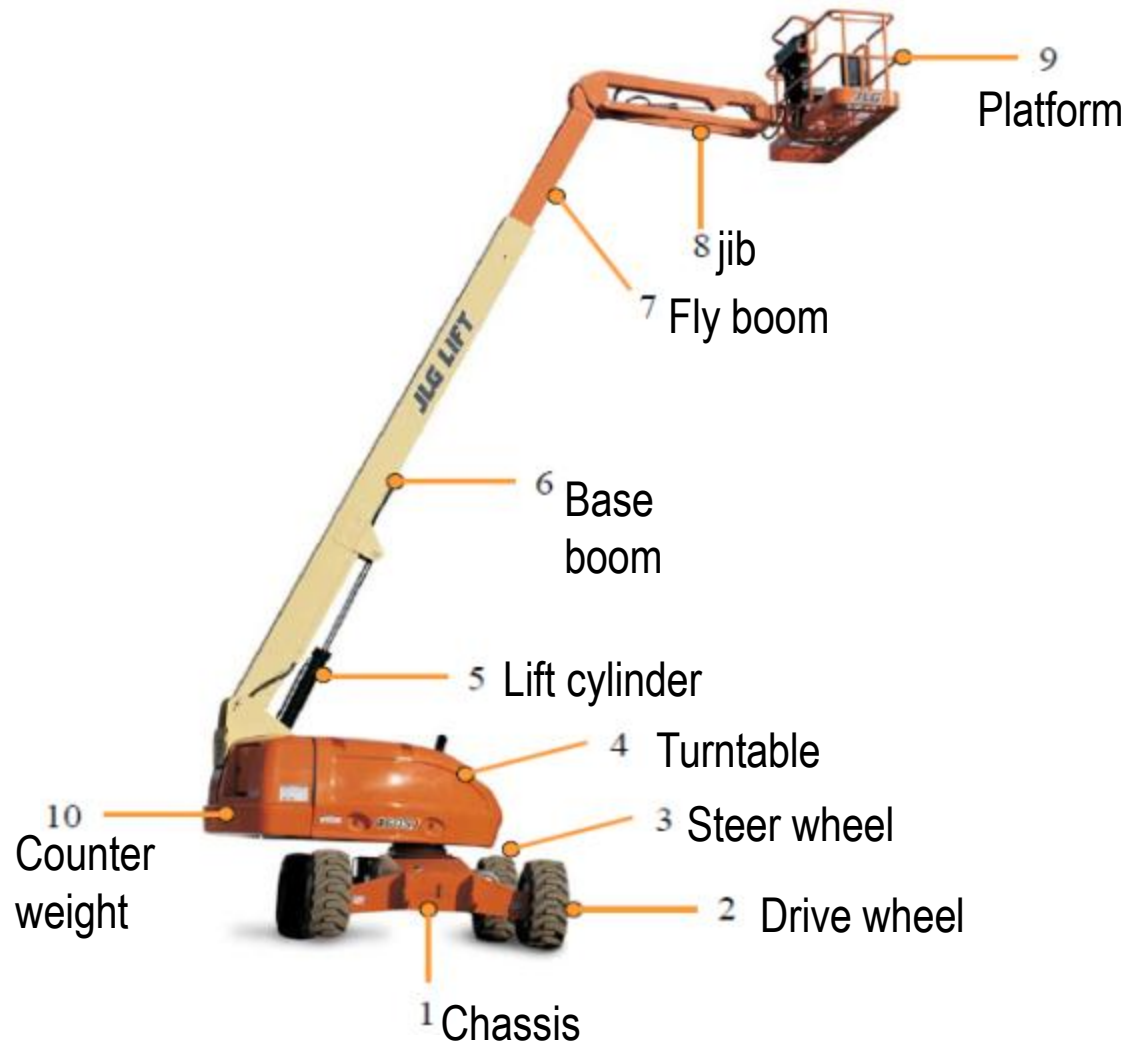
Strictly Confidential

**JLG**<sup>®</sup>  
*reachingout*<sup>™</sup>

# AGENDA

	Contents	Remarks
Purpose	Help sales to understand the features, functions and benefits	
Process	32 slides - 25 minutes Q&A - 5 minutes	
Product	<ol style="list-style-type: none"><li>1. Key structure</li><li>2. Spec sheet</li><li>3. Features and Benefit</li></ol>	

# 1200SJP/1350SJP KEY COMPONENTS



# 1200SJP/1350SJP PARAMETERS

Model	1200SJP	1350SJP
Platform Height 平台高度	36.58m	41.18m
Working Height 工作高度	38.58m	43.18m
Horizontal Outreach 水平延伸	22.86m	24.38m
Turntable 转台回转	360 °Continuous	
Jib Rotation 小臂回转	180 °	
Jib 小臂	2.44m Jib-Plus	
Platform Size 平台尺寸	2.44 X 0.91米	
Load Capacity 平台载重	227 / 454 kg	
Weight 自重	18552kg	20411kg
Engine 发动机	Deutz TD2011L4, 75hp	
Drive 驱动	4WD	
转向	2WS, 4 WS, CRAB	
Max speed 最大速度	5.2 km/h	
Gradeability 爬坡度	45%	
Tire 轮胎	Foam Filled	
Oil Tank 油箱	208 L	

# JLG Ultra Boom Series – 1200SJP / 1350SJP

## JLG 超级高空作业车系列 – 1200SJP / 1350SJP

### ◆ Primary Applications 主要应用

- ◆ Stadiums / Arenas -  
体育场馆 -
- ◆ Co-Gen Plants  
热电厂
  - 137ft (41.76m) Cracking Towers  
137英尺（41.76米）化工厂的分离塔
- ◆ Airports  
机场维修
- ◆ Steel Erection  
钢结构建筑安装工程
- ◆ Mechanical and Sprinkler  
机械与喷淋装置作业
- ◆ Glass and Sheeting  
玻璃与轻钢板材安装



# JLG Ultra Boom Series – 1200SJP / 1350SJP

## JLG 超级高空作业车系列 – 1200SJP / 1350SJP

Working Range

作业范围

1200SJP

1350SJP

Platform Height

平台离地高度

36.58m ( 120 ft.)

36.58米 (120英尺)

41.15m (135 ft.)

41.15米 (135英尺)

Horizontal Reach

水平延伸范围

22.86m (75 ft.)

22.86米 (75英尺)

24.38m (80 ft.)

24.38米 (80英尺)

JibPLUS: Length

JibPLUS: 小臂长度

2.44m (8 ft.)

2.44米 (8英尺)

Horizontal Motion

水平可移动角度

180°

Vertical Motion

纵向可移动角度

130° (+75° / -55° )



# JLG Ultra Boom Series – 1200SJP / 1350SJP

## JLG Ultra Boom 系列 – 1200SJP / 1350SJP

### Dual Capacity

### 双载重能力选择

- 1000 lbs (454kg) restricted  
1000磅（454公斤）- 有受限区域
- 500 lbs. (227kg) unrestricted  
500 磅（227公斤）- 无受限区域
- Selectable by operator  
由操作员选择载重区域
- Work envelope is automatically limited  
工作范围自动限制
- 500 lbs (230kg) when in side swing mode (180 degrees)  
小臂侧面摆动模式（180度）下为500磅（230公斤）



# JLG Ultra Boom Series – 1200SJP / 1350SJP

## JLG 超级高空作业车系列 – 1200SJP / 1350SJP

### JibPLUS

- 8ft (2.44m) Jib Plus  
8英尺（2.44米）工作小臂
- Vertical range of 130° (75° up and 55° down)  
130度垂直范围（向上75度，向下55度）
- Horizontal range of 180°  
180度水平范围
- Powered side stow for shipping  
装运时可以缩短收藏尺寸



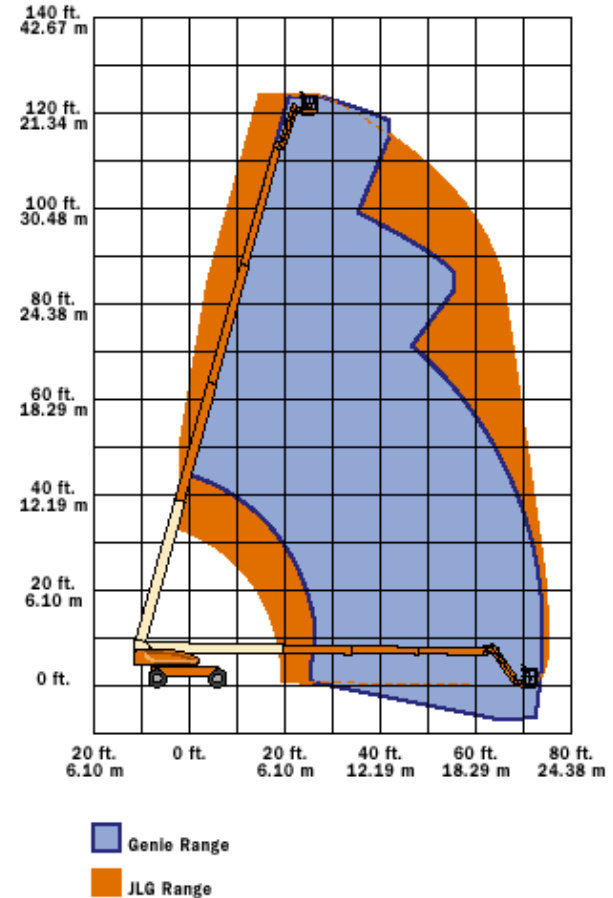


# JLG Ultra Boom Series – 1200SJP Working Envelope

## JLG 超级高空作业车系列 – 1200SJP 工作轨迹包络线

- 1200SJP Work Envelope is 65% Larger in Critical Areas - Over 50ft (15.24m)  
1200SJP的工作区域显示，有效作业区域增加了65% - 50英尺（15.24米）以上
- 1000lbs (455kgs) Envelope is 23% Larger  
1,000磅（455公斤）载重模式下的工作区域显示增加了有效区域23%
- No Sawtooth Cut-outs  
无外围的锯齿形状
- 1000lbs (454kg) Capacity in 77% of Work Envelope  
1,000磅（454公斤）载重区域占全部工作区域的77%

JLG 1200SJP vs Genie S-120

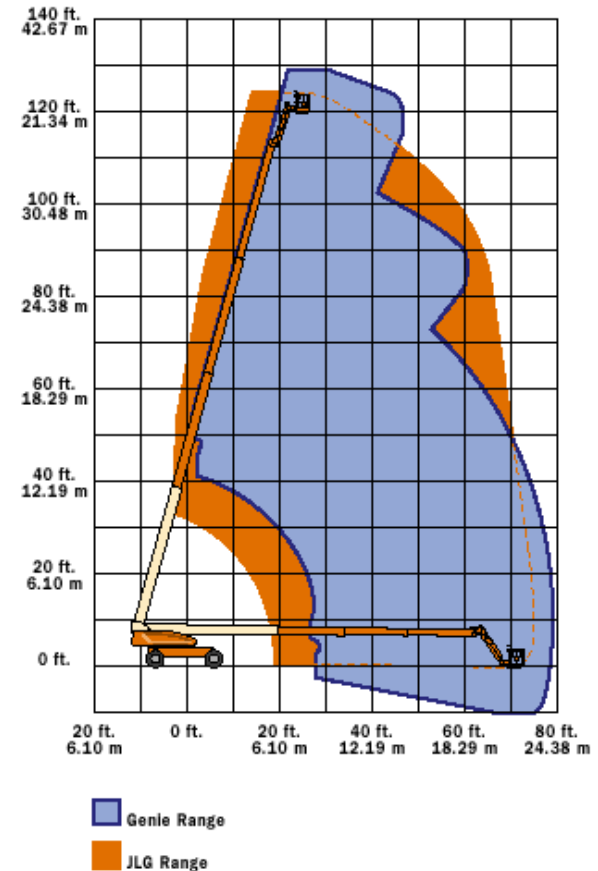


# JLG Ultra Boom Series – 1200SJP Working Envelope

## JLG 超级高空作业车系列 – 1200SJP 工作轨迹包络线

- 1200SJP Work Envelope Is 22% Larger in Critical Areas - Over 50ft (15.24m)  
1200SJP的工作区域在关键区域增加了22% - 50英尺（15.24米）以上
- No Sawtooth Cut-outs  
无锯齿状图样
- 1000lbs (455kgs) Capacity in 77% of Work Envelope  
1,000磅（455公斤）载重条件占全部工作区域面积的77%

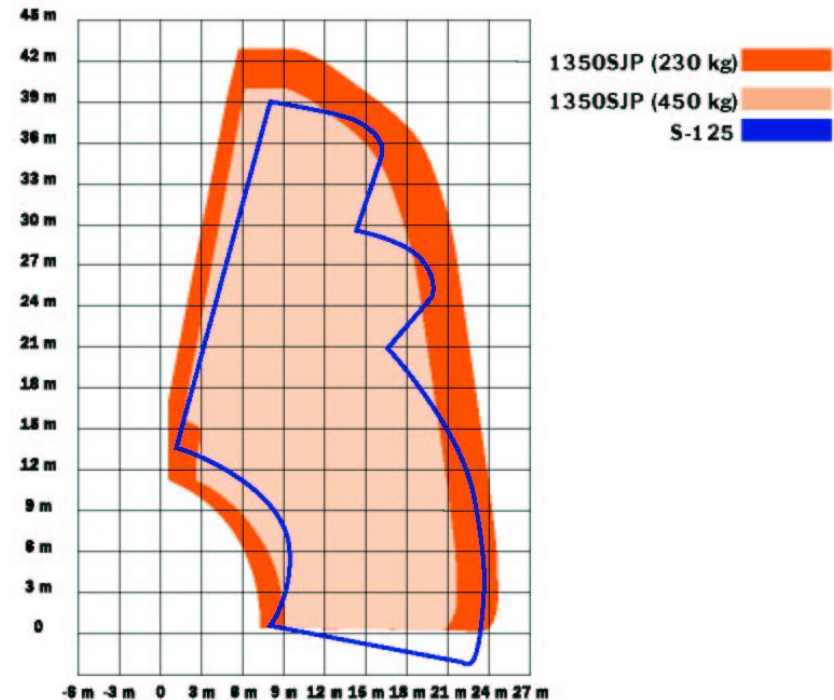
JLG 1200SJP vs Genie S-125



# JLG Ultra Boom Series – 1350SJP Working Envelope

## JLG 超级高空作业车系列 1350SJP工作轨迹包络线

- 1350SJP Work Envelope Is 70% Larger in Critical Areas - Over 50ft (15.24m)  
1350SJP的工作区域在关键区域增加了70% - 50英尺（15.24米）以上
- No Sawtooth Cut-outs  
无锯齿状图样
- 1000lbs (454kg) Capacity in 77% of Work Envelope  
1,000磅（454公斤）载重条件占全部工作区域面积的77%



**JLG 1350SJP vs. Genie S-125**

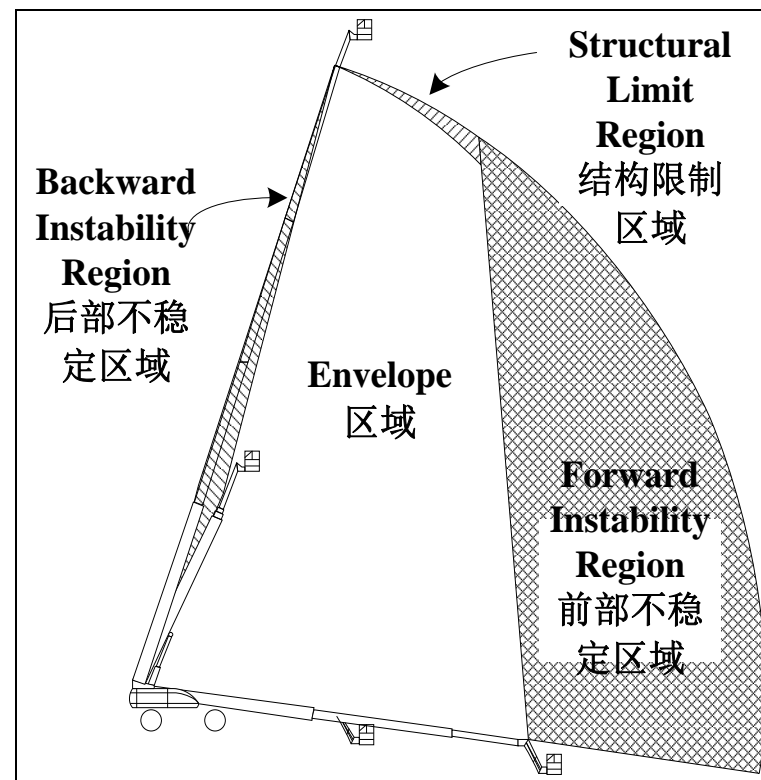
# JLG Ultra Boom Series – 1200SJP / 1350SJP

## JLG 超级高空作业车系列 – 1200SJP / 1350SJP

### Envelope Control Two Separate Systems

#### 两套独立的轨迹包络线控制系统

- ◆ Primary - Envelope Control  
主系统 - 轨迹包络线控制
  - ◆ 2 x Angle sensors –  
2 x 角度传感器 -
    - 1 transmits ascending and 1 descending,  
1个发送上升信号, 1个发送下降信号
  - ◆ 1 length sensor –  
1个长度传感器 -
    - inner mid relative to base boom  
内层中间部位与基座臂相连
  - ◆ 1 length switch –  
1个长度开关 -
    - monitors length sensor  
监控长度传感器



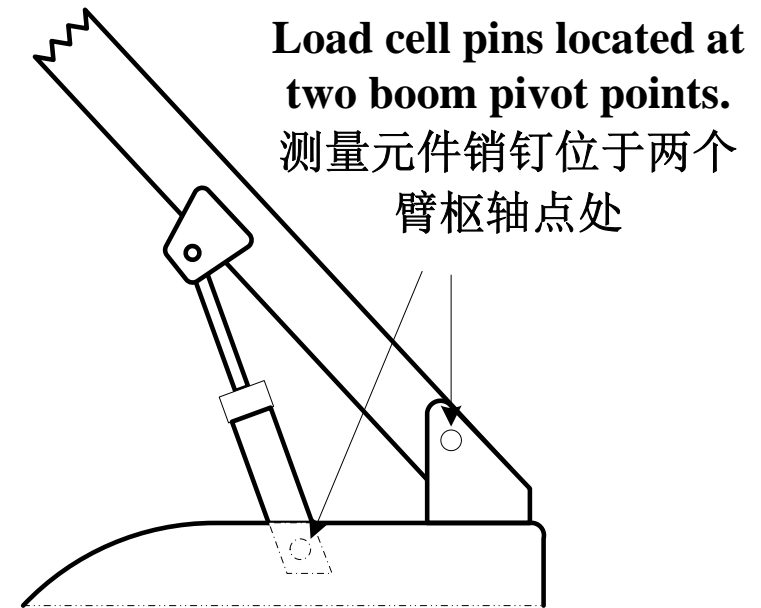
# JLG Ultra Boom Series – 1200SJP / 1350SJP

## JLG 超级高空作业车系列 – 1200SJP / 1350SJP

### Envelope Control Two Separate Systems

#### 两套独立的轨迹包络线控制系统

- ◆ Secondary - Moment Control  
辅助系统 - 运动控制
  - ◆ Strain gauges in boom pivot and lift cylinder pins  
大臂枢轴与升降油缸固定销的过载控制
  - ◆ Monitors loads on pins  
监控固定销上的负载
  - ◆ Only used if primary system fails or significant overloading  
只有在主系统失效或出现明显过载时启用





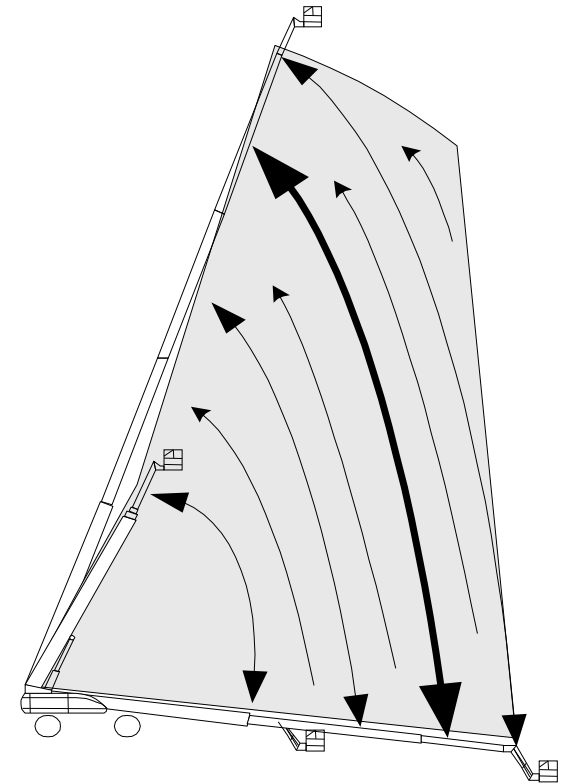
# JLG Ultra Boom Series – 1200SJP / 1350SJP

## JLG 超级高空作业车系列 – 1200SJP / 1350SJP

### Controlled Arc Envelope

### 可控圆弧运动轨迹包络线

- Simulates a machine with unrestricted reach  
类似于工作范围不受限制的设备
- Automatically controls lift and telescope at envelope edge.  
在轨迹包络线边缘处自动控制升降和伸缩动作
- Eliminates the saw tooth no-operation areas  
消除锯齿状非工作区



Controlled Arc Boom  
Movement  
约束弧线内臂的移动

# JLG Ultra Boom Series – 1200SJP / 1350SJP

## JLG 超级高空作业车系列 – 1200SJP / 1350SJP

### Envelope Tracking

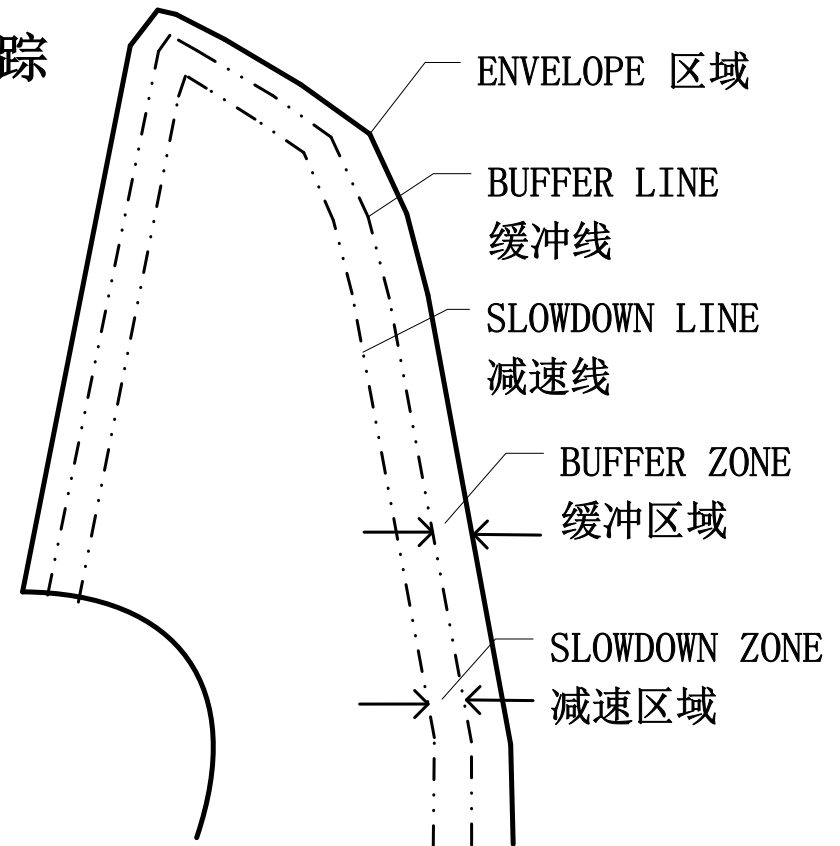
### 轨迹包络线跟踪

- Boom functions automatically slow down as platform approaches edges of the work envelope.

当工作平台接近轨迹包络线时，大臂动作速度自动下降。
- Function deceleration when the platform enters the slow down zone

工作平台进入减速区时功能自动减速
- Creep Speed as the platform enters the buffer zone

当工作平台进入缓冲区 自动爬行



# JLG Ultra Boom Series – 1200SJP / 1350SJP

## JLG 超级高空作业车系列 – 1200SJP / 1350SJP

### Drive / Steer 驱动/转向

- ◆ Full time 4 wheel drive  
完全的4轮驱动
- ◆ 2 drive pumps –  
2个驱动泵 -
  - each drives one side of the machine  
设备两侧各有驱动
- ◆ 3 Steering modes:  
3种转向模式:
  - 2 wheel  
2轮转向
  - Coordinated / All Wheel  
4轮转向
  - Crab w/ 1 to 1 ratio  
侧向蟹行 (1: 1)
- ◆ Steering is synchronized when switching modes  
转换模式时对转向进行同步
- ◆ Identical system to other Ultra Booms  
与其他Ultra Boom系列完全相同的系统



## JLG Ultra Boom Series – 1200SJP / 1350SJP

### JLG 超级高空作业车系列 – 1200SJP / 1350SJP

- Closed loop steering enables steer modes to be changed on fly  
闭路转向装置可瞬间完成转向模式的转换
- Ensures correct ackerman angle for coordinated steering mode and true parallel angle for crab steer  
确保协调转向模式达到正确的内外轮角，蟹行转向模式达到正确的平行角
- Automatically readjusts max steer angle to 45 ° and 25°  
可自动将最大转向角调节至45 度和25度
- Ensures steering is still effective even in sensor fault mode  
万一传感器故障，设备仍可确保转向有效
- Reduces drive speed proportionally to steer angle to improve operator comfort  
根据转向角自动按比例降低行驶速度，提高操作安全性

#### Steering 转向



# JLG Ultra Boom Series – 1200SJP / 1350SJP

## JLG 超级高空作业车系列 – 1200SJP / 1350SJP

- Ground Clearance axle - 30cm (12")  
车轴离地间隙 - 30厘米 (12英寸)
- Ground Clearance Chassis - 60cm (25.5")  
底盘离地间隙 - 60厘米 (25.5英寸)
- Gradeability - 45%  
爬坡能力 - 45%
- Inside turning radius - 2.44m (8' 0")  
内侧转弯半径 - 2.44米 (8英尺)
- Speed - 5.2kph (3.25mph)  
速度 - 5.2公里/小时 (3.25英里/小时)



时)



# JLG Ultra Boom Series – 1200SJP / 1350SJP

## JLG 超级高空作业车系列 – 1200SJP / 1350SJP

- Axles are off-set to retract to 2.49m (8' 2.5")  
车轴最小可收缩到2.49米（8英尺2.5英寸）
- Can be set in under 3.66m (12') of drive length  
(May be set in a shorter distance)  
被设定伸展到3.66米（12英尺）的作业驱动长度（可以设置较短的距离）。
- Can only extend/retract in transport position (boom in and down)  
只能在运输收藏位置安全伸缩（大臂收回并处于下降位置）

### Extending Axles 车轴伸展



## JLG Ultra Boom Series – 1200SJP / 1350SJP

### JLG 超级高空作业车系列 – 1200SJP / 1350SJP

- If system fails when the boom is out of the transport position, drive and steer will cutout until the boom is lowered into the transport position.  
如果系统在大臂不处于运输收藏位置时出现故障，将停止行驶与转向功能，直至大臂下降到运输收藏位置。
- If system can not reset, the boom will not go above or extend out of the transport position.  
如果系统无法复位，大臂不会升高或者伸出运输收藏位置。
- Transport position is less than 30cm (12") of boom extension and +15° above horizontal.  
运输收藏位置是指大臂伸出长度不足30厘米（12英寸）且仰角小于+15度。

### Axle Extension

### 车轴伸展



# JLG Ultra Boom Series – 1200SJP / 1350SJP

## JLG 超级高空作业车系列 – 1200SJP / 1350SJP

### Oscillating Axle 平衡轴

- Axle oscillates only when boom is in the travel position\*  
车轴在大臂处于行驶位置时进入平衡状态\*
- 12" (30cm) of wheel movement  
车轮可以12英寸（30厘米）距离上下越障移动



# JLG Ultra Boom Series – 1200SJP / 1350SJP

## JLG 超级高空作业车系列 – 1200SJP / 1350SJP

Drive Orientation 行驶方向





# JLG Ultra Boom Series – 1200SJP / 1350SJP

## JLG 超级高空作业车系列 – 1200SJP / 1350SJP

### Turntable Components 转台部件

- 4 cylinder Deutz turbo charged producing TCD2011 L04  
4缸道依茨涡轮增压发动机可产生55KW
- Sundstrand Transmission pumps  
Sundstrand 输送泵
- Sundstrand pressure compensated Variable boom function pump  
Sundstrand 压力补偿式可变大臂功能控制泵
- Single integrated manifold valve for functions  
单个集成多管路阀提供各种功能





# JLG Ultra Boom Series – 1200SJP / 1350SJP

## JLG 超级高空作业车系列 – 1200SJP / 1350SJP

### Boom 大臂



4 section boom proportionally extended by hydraulic cylinder and wire ropes

4段式大臂由液压缸和钢丝绳按比例展开

# JLG Ultra Boom Series – 1200SJP / 1350SJP

## JLG超级高空作业车系列 – 1200SJP / 1350SJP

### Platform Leveling 工作平台调平

- Electronic platform leveling  
电控平台自动调平
- Two sensors that monitor platform position  
(sensors monitor platform level not machine level)  
两个用于监控平台状态的传感器（传感器监控的是平台的水平，而不是设备的水平）
- Has a set point controlled by either EMS or Platform Level Switch  
有一个由EMS或者平台水平开关控制的设置点
- Levels platform during all functions  
在执行各种功能时调平平台



# JLG Ultra Boom Series – 1200SJP / 1350SJP

## JLG超级高空作业车系列 – 1200SJP / 1350SJP

### Platform

### 工作平台

- Standard platform size 36 X 96 in. (0.91 x 2.44m)  
标准平台尺寸 36 X 96 英寸 (0.91 x 2.44米)
- 180° rotating platform  
180度旋转平台
- Standard JLG cast aluminum control console box  
标准JLG铸铝控制箱



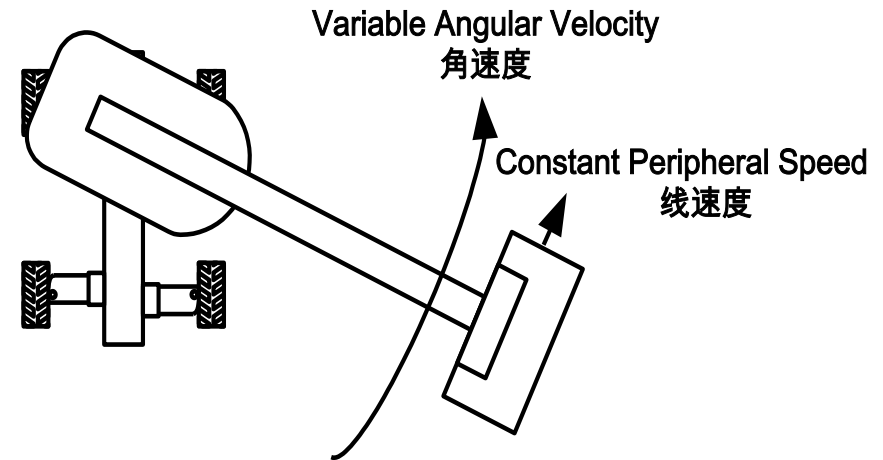
# JLG Ultra Boom Series – 1200SJP / 1350SJP

## JLG超级高空作业车系列 – 1200SJP / 1350SJP

### Swing Speed Proportional

### 成比例的摆动速度

- Length and angle sensor calculate radius  
长度和角度传感器用于计算半径
- Maintains constant velocity regardless of boom position  
无论大臂处于什么位置都可保持恒速
- Improved operator comfort  
提高操作员的安全和舒适性



# JLG Ultra Boom Series – 1200SJP / 1350SJP

## JLG超级高空作业车系列 – 1200SJP / 1350SJP

### Controlled Angle Swing      可控摆动角度

- When swinging, the boom will maintain a constant elevated boom angle.  
在摆动时，大臂将保持恒定的大臂升高角度。
- Start at 30<sup>0</sup> and lift function will adjust to maintain height during swing.  
从30<sup>0</sup>开始，升降功能将进行调节以在摆动过程中保持高度。



# JLG Ultra Boom Series – 1200SJP / 1350SJP

## JLG超级高空作业车系列系列 – 1200SJP / 1350SJP

### Auxilliary Power 辅助动力

- When lifting down the oil from the lift cylinder is directed to the telescope cylinder  
在执行下降动作时，升降油缸中的液压油流向伸缩油缸
- Platform come down and in simultaneously in a direction away from the boundaries  
平台在下降的同时朝离开边界的方向运动
- Saves battery power by using gravity lift down in the lift function  
利用升降功能中的重力下降特性可节省电池动力

# JLG Ultra Boom Series – 1200SJP / 1350SJP

## JLG超级高空作业车系列 – 1200SJP / 1350SJP

### Easy to Transport 易于运输

- Wheelbase - 3.81m (12' 6")  
轴距 - 3.81米 (12英尺6英寸)
- Stowed Height - 3.05m (10' 0")  
收藏高度 - 3.05米 (10英尺)
- Weight: 重量:
  - 1200SJP - 18,650 kg (41,100 lbs)  
1200SJP - 18,650 公斤 (41,100磅)
  - 1350SJP - 20,300 kg (44,750 lbs)  
1350SJP - 20,300 公斤 (44,750磅)
- Length: 长度:
  - 1200SJP - 10.64m (34' 11")  
1200SJP - 10.64米 (34英尺11英寸)
  - 1350SJP - 11.86m (38' 11")  
1350SJP - 11.86米 (38英尺11.86英寸)
- Width: 宽度:
  - Stowed 2.49m (8' 2")  
收藏状态 - 2.49米 (8英尺2英寸)
  - Extended 3.81m (12' 6")  
展开状态 - 3.81米 (12英尺6英寸)



**NO SPECIAL PERMITS REQUIRED!!**  
**无需特殊许可!!**

## JLG Ultra Boom Series – 1200SJP / 1350SJP

### JLG超级高空作业车系列 – 1200SJP / 1350SJP

- ULTRA Reach  
超大作业范围
- ULTRA Power  
超强驱动动力
- ULTRA Value  
超高使用价值



**THANKS!**

**JLG**<sup>®</sup>  
*reachingout*

