

Greater Innovation.  
Higher Value.

# 1850SJ - JLG Industries New UltraBoom Review

Michael Jin  
2014.10.14

**JLG**<sup>®</sup>  
*reachingout*



# 主要特点Key Competitive Advantages



- 最大的工作覆盖范围, 接近三百万立方英尺(8.2万立方米) Largest work envelope with nearly 3 million cubic feet of reachable space
  - 领先的工作效率 Leader in Productivity
    - 起升速度最快(小于5分钟) Fastest lift speed (less than five minutes)
    - 最大的承载能力(454/227kg) Highest capacity (1,000 vs. 750)
    - 最快的行驶速度 Fastest drive speed (2.8 vs. 2.5)
    - 爬坡度最佳 Best gradeability (40% vs. 35%)
    - 更大的功率 More horsepower (99.8 vs. 74.9)
    - 轴缩回/展开时间小于1分钟 Axels retract/extend in under a minute
  - 伸缩式小臂 Telescopic jib
    - 小臂可伸出缩回, 提供更好的跨越高度和水平延伸能力 Jib extends and retracts to provide additional reach, up and over capability and the ability to telescope into and around structures
  - LCD Display provides new level of operator and service interaction
- 独有的LCD显示屏提供全新的人机交互功能

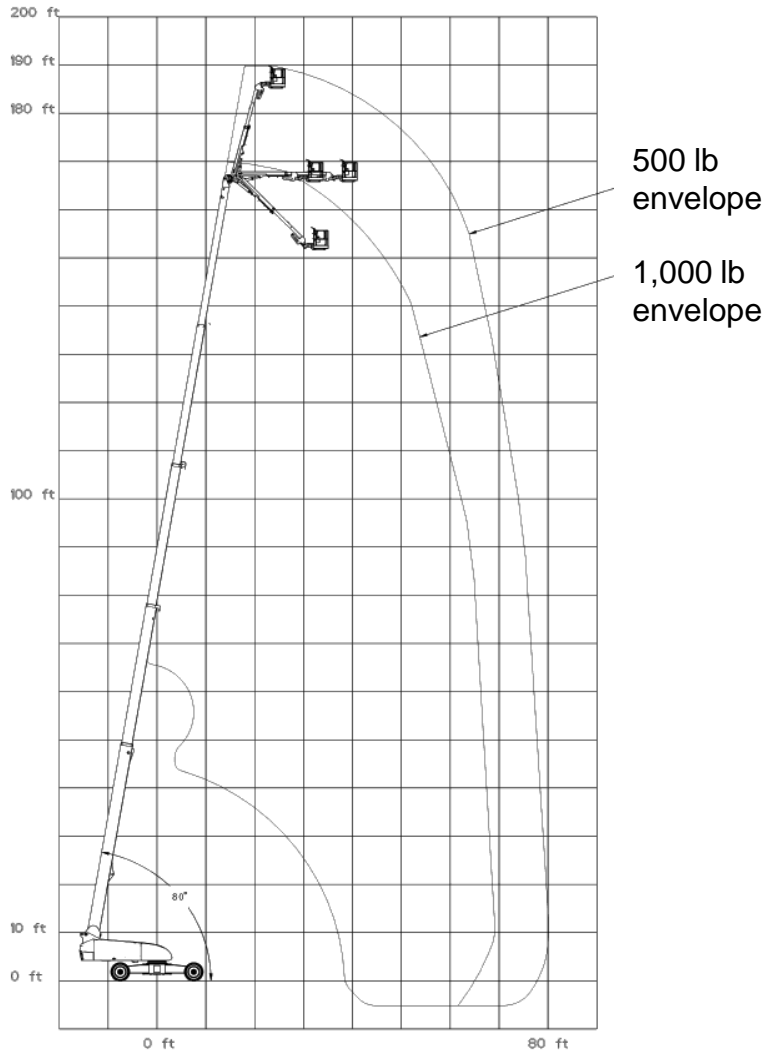
# 全新一代超高臂式高空作业平台 The Next Ultra Boom



# 平台和控制系统 Platform and Control Box

- 采用JLG经典控制平台, 降低培训成本Keep the JLG traditional control box, minimize the training cost
- LCD显示屏大大提升人机交互功能LCD Display provides new level of operator and service interaction
- 平台可选择不同大小类型, 满足不同应用需求。  
Different size platforms are selectable for different applications.
- 配有ADE先进设计控制系统, 控制更平稳可靠  
Control ADE system, reliable and smooth.
- 所有控制采用全比例控制  
All proportional controls

# 工作范围 Working Envelope



- 业内最高的185英尺7英寸(56.56米)平台高度。Industrial leading 185 feet, 7 inches maximum platform height
- 80英尺的水平延伸80 ft of horizontal outreach
- 在最高处的水平延伸可达26英尺26 ft of horizontal outreach at 185 ft 7 inches
- 175英尺高时，水平延伸40英尺40 ft of horizontal reach at 175 ft
- 120英尺高时，水平延伸70英尺70 ft of horizontal reach at 120 ft

# 臂 Boom



- 大臂由5节臂组成 Boom is a five section, fully proportional boom
- 地面到最高点 Ground to max height
  - 4分40秒 4 minutes, 40 seconds
- 最高点到地面 Max height to ground
  - 4分57秒 4 minutes 57 seconds
- 小臂具有独特的伸缩功能, 可从13英尺伸长至20英尺 Jib has two sections and extends from 13 ft to 20 ft.

# 油箱侧 Tank Side

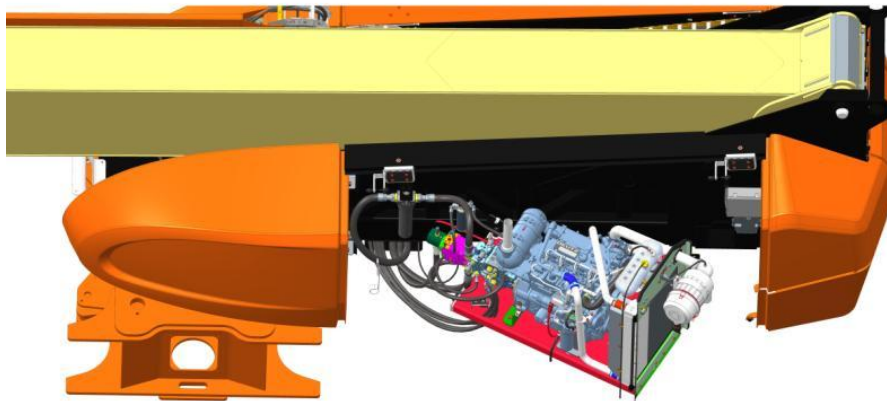


- 燃油箱容量200升，可连续运行超过26小时 Fuel Tank Capacity is 52.8 gallons(200 liters), can continuously work for 26 hours
- 液压油箱248升Hydraulic Tank Capacity is 75.1 gallons (248 liters)
- 双蓄电池同侧排列，额度放电量1400CCA，一个提供启动，一个提供控制。Batteries are accessible in same compartment and are rated at 1400 CCA. One for start and auxiliary power, one for controls

# 柴油机舱 Engine Compartment

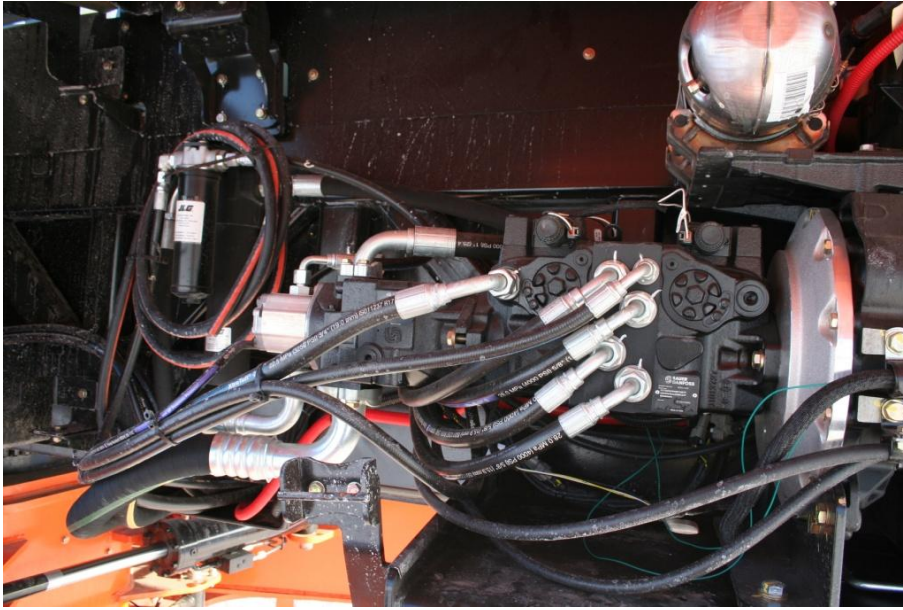


- 道依茨TCD3.6L4型柴油机，涡轮增压，74.4KW. Deutz TCD 3.6 L4 is a Turbo Charged 3.6 litre, 4 cylinder diesel rated at 99.8 HP (74.4 kw)
- 海拔3000米以下无功率损失No de-rate up to 9,800 ft (3,000 meters)
- 柴油机可转出，维护便利  
Engine tray out for easy access to inside components.



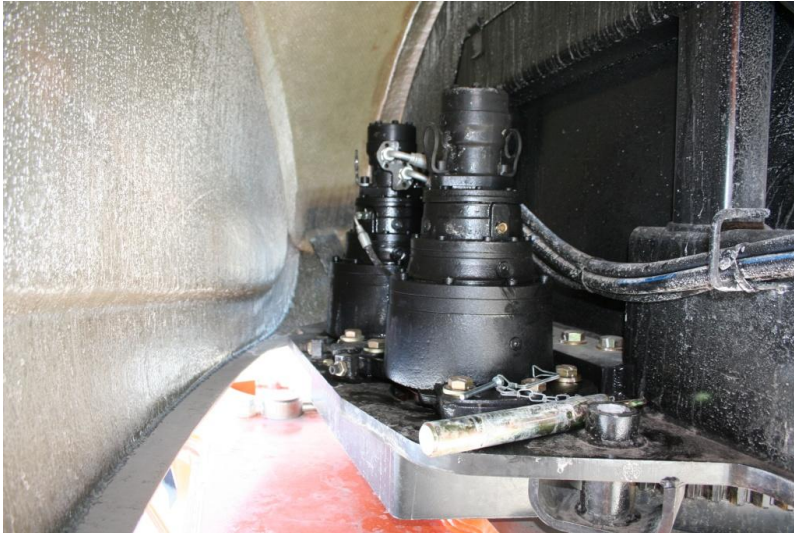


# 双驱动系统 Twin Drive System



- 双液压泵提供左右两套驱动马达  
Twin Hydraulic Pumps provide hydraulic flow to right and left drive motors

# 双回转系统Twin Swing System



- 双回转驱动系统降低齿轮的应力负载，提升回转齿轮的寿命，降低故障率  
Twin Swing Drive system reduces load on bearing and pinion teeth, extending the bearing life, reducing the failure rate
- 小齿轮盖板保护小齿轮免受杂物的损伤  
Pinion cover protects pinion from debris

# 可展开式底盘Deployable Chassis



- 运输状态长47'9.5" 47 ft 9.5" long in transport position
- 10'高 10 ft high, 8' 2" 宽 wide
- 运输时只需要获得超重许可, 无需超尺寸许可Transportable with only an over weight permit, no over size permit required (60,300 lbs)
- 液压油缸展开至16'6"的工作状态, 每个油缸展开和缩回一个轴Axles hydraulically pivot out to width of 16' 6". They do not telescope. Once cylinder per axle deploys or retracts axle
- 轴展开时间小于1分钟Axles out or in, under 1 minute
- 行驶速度, 高速2.8mph, 起升后低速0.3mph。Travel, 2.8 mph or .3 mph when elevated

# 展开轴和传感器 Axle Cylinders and Sensor



- 每根轴上带有传感器，确定轴的具体位置。One linear sensor per axle senses axle position, keeps steer wheels in line and advises when axles are set
- 配合车轮上的回转传感器，确保转向精确Works with rotary sensors on top of wheel king pins to keep wheels steered properly
- 轴完成展开后，控制面板上的有灯亮起。Turns light on in platform when axles are fully deployed



# 驱动和转向 Drive and Steering

- 全时4轮驱动 Four wheel drive
- 3种转向模式 3 selectable steering modes
  - ✓ 2 wheel  
2轮转向
  - ✓ Coordinated / All Wheel  
4轮转向
  - ✓ Crab w/ 1 to 1 ratio  
侧向蟹行(1:1)



# 轮胎 Tire

- 标配泡沫填充轮胎 Foam Filled Tire as standard

# 罩壳 Hood

- 铁质鸥翼式展开门 Steel gull wing hood



# 丰富的可选项 Multiple Options



- 0.91x1.83m平台36 x 72 in. (.91 x 1.83 m) Platform
- 自闭式旋转门Inward Self-Closing Swing Gate
- 防坠落系统Fall Arrest Platform
- 安装至顶部围栏的防护网防护网 Mesh to Top
- 照明组件Light Package
- 软接触(防碰撞)系统Soft Touch System
- 冷启动组件Cold Weather Start Kit
- 恶劣环境组件Hostile Environment Kit
- 琥珀色闪烁灯Flashing Amber Beacon
- 工具托盘Tool Tray



**JLG**®

*reachingout*™

